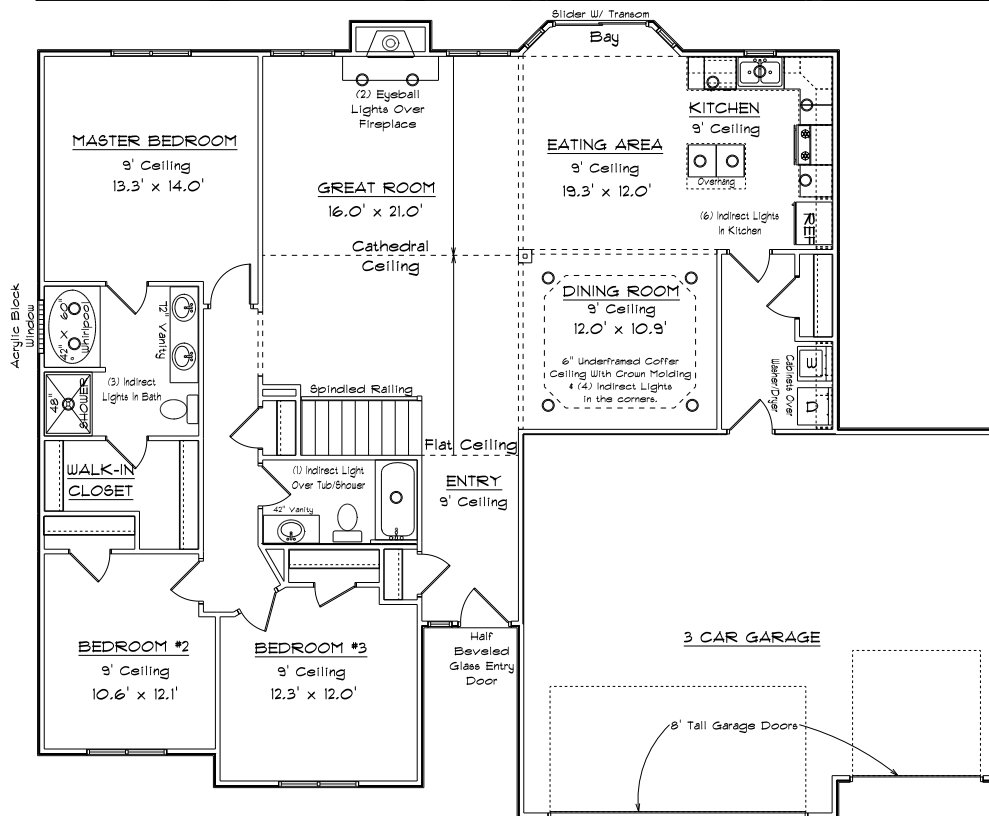


# CONTRY HOMES

## THE 1815 C GREATROOM

### LOT 94 TIMBERLYNE HOLLOW



#### FEATURES:

- |   |   |
|---|---|
| 1815 Sq. Ft. Living Area                  | 1 3/4 Bath                                      |
| Formal Dining Room<br>W/ Coffered Ceiling | Greatroom W/ Cathedral<br>Ceiling and Fireplace |
| Energy Efficient                          | Range and Dishwasher                            |
| Finished Flooring                         | Main Floor Laundry                              |
| Attached 3 Car Garage                     | Oak Cabinets & Vanities                         |
| 3 Bedroom                                 |   |

\* All Dimensions are Approximate \*

\* Note: All elevations are representative only and subject to change without notice. Consult a Contry Homes representative for details.

**JOE CONTARINO**  
 Broker Associate  
 Dickerson & Nieman-Realtors  
 Office (815) 399-8100  
 Email: [info@contryhomes.com](mailto:info@contryhomes.com)  
 Web: [www.contryhomes.com](http://www.contryhomes.com)

August 30, 2007